

PROPOSED BOUNDARIES OF TERRITORY
 PROPOSED FOR ANNEXATION IN THE FUTURE TO
 COUNTY OF SACRAMENTO
 COMMUNITY FACILITIES DISTRICT NO. 2012-1
 (CLEAN ENERGY)

COUNTY OF SACRAMENTO STATE OF CALIFORNIA
 OCTOBER 2012 1" = 3 MILES
 SHEET 1 OF 1

CLERK'S MAP FILING STATEMENT
 FILED IN THE OFFICE OF THE CLERK OF THE BOARD OF SUPERVISORS,
 COUNTY OF SACRAMENTO, STATE OF CALIFORNIA, THIS 30th DAY OF
 October, 2012.

Cynthia D.
 CLERK OF THE BOARD OF SUPERVISORS
 COUNTY OF SACRAMENTO, CALIFORNIA

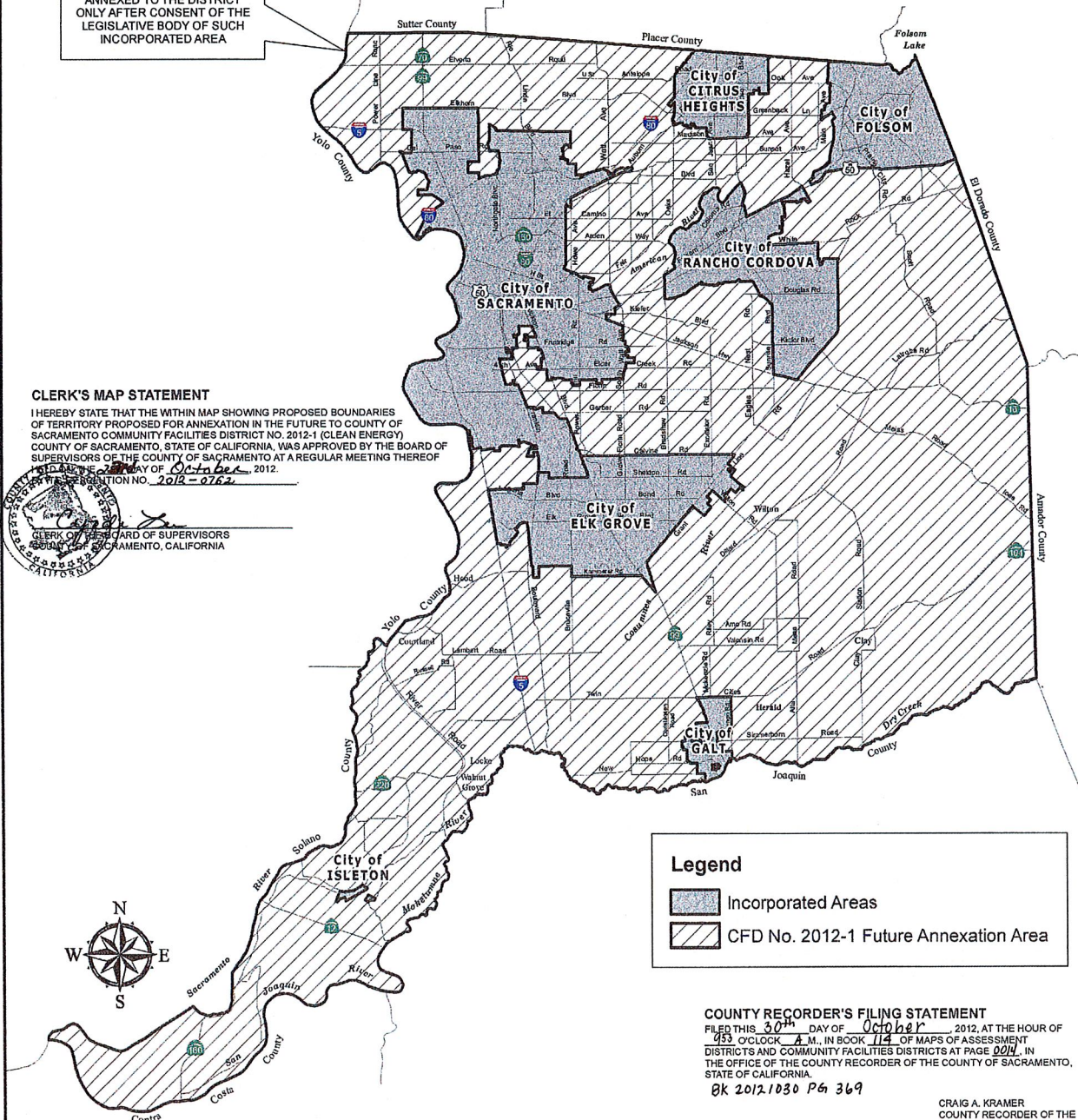
FUTURE ANNEXATION AREA-
 ALL TERRITORY WITHIN THE
 COUNTY OF SACRAMENTO;
 TERRITORY WITHIN SHADED
 INCORPORATED AREAS TO BE
 ANNEXED TO THE DISTRICT
 ONLY AFTER CONSENT OF THE
 LEGISLATIVE BODY OF SUCH
 INCORPORATED AREA

CLERK'S MAP STATEMENT

I HEREBY STATE THAT THE WITHIN MAP SHOWING PROPOSED BOUNDARIES
 OF TERRITORY PROPOSED FOR ANNEXATION IN THE FUTURE TO COUNTY OF
 SACRAMENTO COMMUNITY FACILITIES DISTRICT NO. 2012-1 (CLEAN ENERGY)
 COUNTY OF SACRAMENTO, STATE OF CALIFORNIA, WAS APPROVED BY THE BOARD OF
 SUPERVISORS OF THE COUNTY OF SACRAMENTO AT A REGULAR MEETING THEREOF
 HELD ON THE 27th DAY OF October, 2012.
 AT THE REGISTRATION NO. 2012-0762.



CLERK OF THE BOARD OF SUPERVISORS
 COUNTY OF SACRAMENTO, CALIFORNIA



Legend

- Incorporated Areas
- CFD No. 2012-1 Future Annexation Area

COUNTY RECORDER'S FILING STATEMENT
 FILED THIS 30th DAY OF October, 2012, AT THE HOUR OF
 4:53 O'CLOCK P.M., IN BOOK 114 OF MAPS OF ASSESSMENT
 DISTRICTS AND COMMUNITY FACILITIES DISTRICTS AT PAGE 0014, IN
 THE OFFICE OF THE COUNTY RECORDER OF THE COUNTY OF SACRAMENTO,
 STATE OF CALIFORNIA.
 BK 2012.1030 Pn 369

CRAIG A. KRAMER
 COUNTY RECORDER OF THE
 COUNTY OF SACRAMENTO,
 CALIFORNIA

BY: *Undermson*
 DEPUTY

FILE: _____